



Rod Hanger approved for use in cracked and uncracked concrete

TDS | 1024.1

ETA APPROVED ROD HANGER

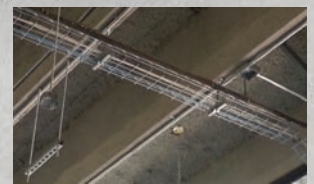
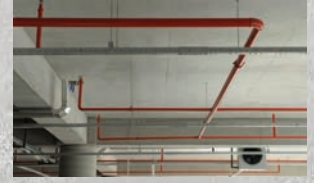
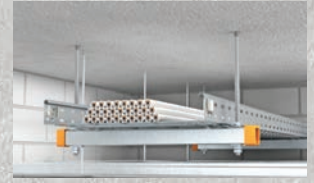
STEP 1 CASE HARDENED

Case hardening to provide the shank of the screw with adequate strength, good ductility, and hydrogen embrittlement resistant characteristics.



STEP 2 HEAT TREATED

Selective through hardening to provide the drill point and lead threads with good drilling and tapping performance.



Vertical Hanging Applications

- HVAC ducting
- Plumbing pipes and services
- Electrical cable trays
- Fire sprinkler systems



National Code
Compliant



ETA
18/0644
Approved



Cracked
Concrete
Approved



Fire
Rated
Fasteners



The ThunderBolt® Pro-XTM M10 rod hanger consists of a proprietary two step heat treatment process offering the ultimate in concrete screw anchoring for services applications.

ZINC INTERNAL

NEW



Part No.	Description	mm	mm	metric	mm	mm
SXTM-IM06057	6 x 57 ETA Rod Hanger (M10)	6	65	M10	13	57



Rod Hanger approved for use in cracked and uncracked concrete

TDS | 1024.1

MATERIAL SPECIFICATIONS



Anchor Component	Steel
Body M10	Steel 10B21
Coating	Zinc coating: electro plated (> 5µm)

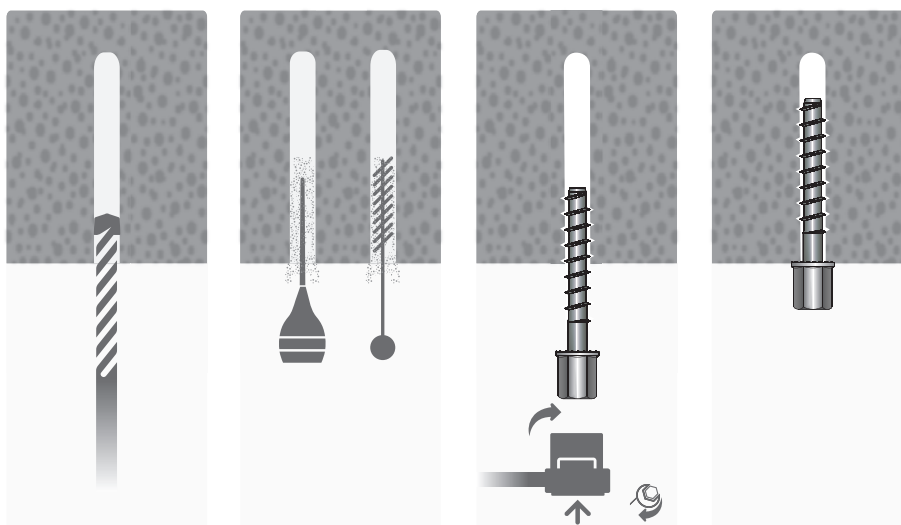
SPECIFICATION PARAMETERS (TABLE A)

Installation Parameters			
Size: 6 x 57			
Part No. SXTM-IM06057			
Length of Anchor	L	mm	57
External Thread	D	mm	7.5
Internal Thread	M	mm	M10
Nominal Diameter of drill bit	d ₀	mm	6
Nominal Embedment Depth	h _{nom}	mm	57
Min. hole depth in concrete	h ₁	mm	65
Clearance hole	d _f	mm	9
Installation Torque	T _{inst}	Nm	20
Wrench size	WS	mm	13
Max power output, impact driver	T _{max}	Nm	80
Minimum member thickness	h _{min}	mm	100
Minimum edge distance	C _{min}	mm	40
Minimum spacing	S _{min}	mm	40
Design Loads in 32 MPa min.			
Design Tension load	N _{rd}	kN	4.2
Design Shear Load	V _{rd}	kN	5.3

Advantages of Dual Hardness Concrete Screw Anchor

- Proprietary heat treatment process designed to eliminate hydrogen embrittlement issues and offering optimum ductility
- Consistent performance every time in all base materials
- Available in flanged hex head with M10 internal thread
- Fast installation at reduced torque using powered impact screw gun
- Flanged hex head locking serrations designed to resist loosening and Improve dynamic load performance
- Chamfered tip centres anchor and aids installation
- Designed for cracked and non-cracked concrete
- No expansion, ideal for close to edge applications
- Removable
- Fire rated
- ETA assessment – ETA-18/0644 used only for multiple fixings for non-structural applications in accordance with EAD 330747-00-601 (previously ETAG 001 - Part 6).

INSTALLATION

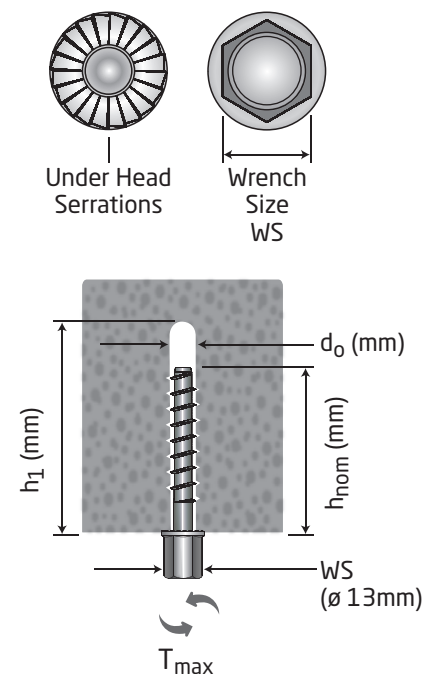


Drill hole to the depth h₁

Clean the hole.

Screw in the anchor by using a torque wrench or an impact screw driver

Once flange head is fully seated on the base material surface, installation is complete



If using torque wrench:
T_{inst} acc. to Table A.

If using impact screw driver:
T_{max} acc. to Table A.